

# Can Coolers

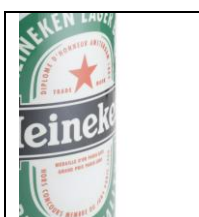


Strong flip/flop glass lids gives easy access

The can cooler is easy movable with castors



Specifications		ETK 40
Volume	ltr	40
Temp. Range	C	0/12
Shelves		na
Lock		na
Internal light		na
Energy cons.	kWh/24h	1,8
Weight	kg	24
Dim, HxWxD	mm	H=740, ø=440



Your branding can be mounted on the can cooler